

Please check the examination details below before entering your candidate information

Candidate surname					Other names				
Centre Number				Candidate Number					
<input type="text"/>	<input type="text"/>	<input type="text"/>	<input type="text"/>	<input type="text"/>	<input type="text"/>	<input type="text"/>	<input type="text"/>		

Pearson Edexcel International Advanced Level

Wednesday 09 October 2024

Afternoon (Time: 1 hour 30 minutes) **Paper reference** **WCH11/01**

Chemistry

International Advanced Subsidiary/Advanced Level

UNIT 1: Structure, Bonding and Introduction to Organic Chemistry

You must have:
Scientific calculator, ruler

Total Marks

Instructions

- Use **black** ink or ball-point pen.
- If pencil is used for diagrams/sketches/graphs it must be dark (HB or B).
- **Fill in the boxes** at the top of this page with your name, centre number and candidate number.
- Answer **all** questions.
- Answer the questions in the spaces provided
– *there may be more space than you need.*

Information

- The total mark for this paper is 80.
- The marks for **each** question are shown in brackets
– *use this as a guide as to how much time to spend on each question.*
- You will be assessed on your ability to organise and present information, ideas, descriptions and arguments clearly and logically, including your use of grammar, punctuation and spelling.
- A Periodic Table is printed on the back cover of this paper.

Advice

- Read each question carefully before you start to answer it.
- Show all your working in calculations and include units where appropriate.
- Try to answer every question.
- Check your answers if you have time at the end.

Turn over ►

P78212A

©2024 Pearson Education Ltd.
V:1/1/1/1/




Pearson

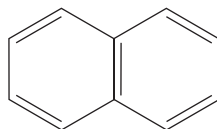
SECTION A

Answer ALL the questions in this section.

You should aim to spend no more than 20 minutes on this section.

For each question, select one answer from A to D and put a cross in the box . If you change your mind, put a line through the box and then mark your new answer with a cross .

- 1 What is the molecular formula of naphthalene?



- A C₁₀H₈
 B C₁₀H₁₀
 C C₁₂H₁₀
 D C₁₂H₁₂

(Total for Question 1 = 1 mark)

- 2 Magnesium azide is an ionic compound containing the azide ion, N₃⁻.

The empirical formula of magnesium azide is

- A Mg₃N
 B MgN₂
 C MgN₃
 D MgN₆

(Total for Question 2 = 1 mark)

- 3 How many oxygen **atoms** are there in 0.0100 mol of H₂SO₄?

[Avogadro constant, $L = 6.020 \times 10^{23} \text{ mol}^{-1}$]

- A 6.020×10^{21}
 B 1.204×10^{22}
 C 2.408×10^{22}
 D 4.214×10^{22}

(Total for Question 3 = 1 mark)



- 4 Two identical sealed flasks, containing different gases, are side by side. Each flask contains one gas, with the gases at the same temperature and pressure.

Flask **A** contains 4.0×10^{-3} mol of methane.

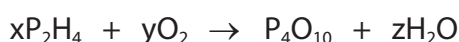
Flask **B** contains 160 mg of a different gas.

Which could be the gas in Flask **B**?

- A** argon
- B** carbon dioxide
- C** helium
- D** neon

(Total for Question 4 = 1 mark)

- 5 Diphosphane, P_2H_4 , reacts spontaneously with oxygen.

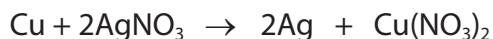


The equation for this reaction is balanced when

- A** $x = 1$ $y = 6$ $z = 2$
- B** $x = 2$ $y = 6$ $z = 2$
- C** $x = 2$ $y = 7$ $z = 4$
- D** $x = 4$ $y = 9$ $z = 8$

(Total for Question 5 = 1 mark)

- 6 Copper metal can displace silver from silver nitrate solution according to the equation shown.



10 g of copper metal was added to an excess of silver nitrate solution.

The silver metal was collected, washed with deionised water and left to dry.

What is the mass of silver metal collected, assuming a 100% yield?

- A** between 10 g and 20 g
- B** 20 g
- C** between 20 g and 40 g
- D** more than 40 g

(Total for Question 6 = 1 mark)

DO NOT WRITE IN THIS AREA

DO NOT WRITE IN THIS AREA

DO NOT WRITE IN THIS AREA



P 7 8 2 1 2 A 0 3 2 8

7 This question is about the thermal decomposition of calcium nitrate.



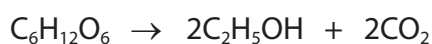
What volume of gas is produced by the complete decomposition of 0.050 mol of calcium nitrate at room temperature and pressure (r.t.p.)?

[Molar volume of a gas at r.t.p. = $24 \text{ dm}^3 \text{ mol}^{-1}$]

- A 600 cm^3
- B 1.20 dm^3
- C 3.00 dm^3
- D 6.00 dm^3

(Total for Question 7 = 1 mark)

8 Ethanol is formed from glucose during fermentation.



What is the atom economy by mass for the formation of ethanol in this reaction?

- A 26%
- B 49%
- C 51%
- D 96%

(Total for Question 8 = 1 mark)

Use this space for any rough working. Anything you write in this space will gain no credit.

DO NOT WRITE IN THIS AREA

DO NOT WRITE IN THIS AREA

DO NOT WRITE IN THIS AREA



9 The table shows some data about fundamental particles in an atom.

Particle	Mass / g
electron	0.0009×10^{-24}
neutron	1.6748×10^{-24}
proton	1.6725×10^{-24}

(a) An atom of hydrogen can be represented as ${}^1\text{H}$.

What is the mass, in grams, of this hydrogen atom?

(1)

- A 1.6725×10^{-24}
- B 1.6734×10^{-24}
- C 3.3473×10^{-24}
- D 3.3482×10^{-24}

(b) Which of the particles would be deflected by an electric field?

(1)

- A electrons only
- B electrons and protons only
- C neutrons and protons only
- D electrons, neutrons and protons

(Total for Question 9 = 2 marks)

Use this space for any rough working. Anything you write in this space will gain no credit.

DO NOT WRITE IN THIS AREA

DO NOT WRITE IN THIS AREA

DO NOT WRITE IN THIS AREA



P 7 8 2 1 2 A 0 5 2 8

10 This question is about the Period 3 elements Na, Mg, Al, Si, P, S and Cl.

(a) Which statement is **not** correct for these Period 3 elements?

(1)

- A atoms of Cl(g) have the highest first ionisation energy
- B ions of Cl⁻(g) and S²⁻(g) have the same ionic radius
- C atoms of Na(g) have the largest atomic radius
- D atoms of P(g) have the most unpaired electrons

(b) The melting temperatures of these elements are shown in the table.

Element	Na	Mg	Al	Si	P	S	Cl
Melting temperature / K	371	922	933	1683	317	392	172

Which of the elements has the strongest **intermolecular** forces?

(1)

- A Al
- B Si
- C P
- D S

(Total for Question 10 = 2 marks)

Use this space for any rough working. Anything you write in this space will gain no credit.

DO NOT WRITE IN THIS AREA

DO NOT WRITE IN THIS AREA

DO NOT WRITE IN THIS AREA



11 Which row of the table shows properties consistent with the type of bonding shown?

	Bonding	Solubility in water	Melting temperature	Electrical conductivity of solid
<input type="checkbox"/> A	ionic	soluble	high	poor
<input type="checkbox"/> B	ionic	soluble	low	good
<input type="checkbox"/> C	metallic	soluble	low	good
<input type="checkbox"/> D	metallic	insoluble	high	poor

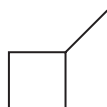
(Total for Question 11 = 1 mark)

12 Which ion is isoelectronic with a noble gas atom (Group 0/8)?

- A H^+
- B O^-
- C Sc^{3+}
- D Zn^{2+}

(Total for Question 12 = 1 mark)

13 Cycloalkanes undergo free radical substitution reactions by the same mechanism as methane. Three isomeric cycloalkanes are shown.



Isomer X



Isomer Y



Isomer Z

Which react with chlorine to produce four different monochlorinated products?

- A All 3 isomers
- B Isomer X and Isomer Z only
- C Isomer Y and Isomer Z only
- D Isomer X only

(Total for Question 13 = 1 mark)

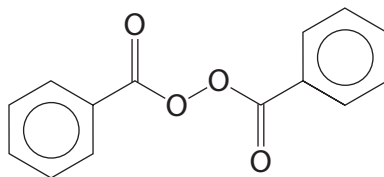
DO NOT WRITE IN THIS AREA

DO NOT WRITE IN THIS AREA

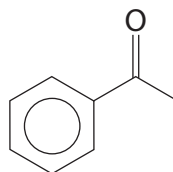
DO NOT WRITE IN THIS AREA



- 14 Polymerisation of alkenes occurs via a free radical mechanism. This reaction is started by the addition of small amounts of another compound. The structure of one of these compounds is shown.



This can be represented as $R-O-O-R$ where $R-$ is



Which step in the mechanism is an initiation step?

- A $R-O-O-R \rightarrow 2R-O\cdot$
- B $R-O-CH_2-CH_2\cdot + CH_2=CH_2 \rightarrow R-O-CH_2-CH_2-CH_2-CH_2\cdot$
- C $2R-O-CH_2-CH_2\cdot \rightarrow R-O-CH_2-CH_2-CH_2-CH_2-O-R$
- D $R-O\cdot + CH_2=CH_2 \rightarrow R-O-CH_2-CH_2\cdot$

(Total for Question 14 = 1 mark)

Use this space for any rough working. Anything you write in this space will gain no credit.

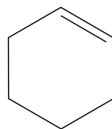
DO NOT WRITE IN THIS AREA

DO NOT WRITE IN THIS AREA

DO NOT WRITE IN THIS AREA



15 This question is about cyclohexene, a cyclic alkene.



(a) What is the general formula of cyclic alkenes such as cyclohexene?

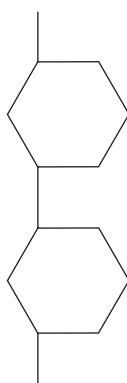
(1)

- A** C_nH_{2n-4}
- B** C_nH_{2n-2}
- C** C_nH_{2n}
- D** C_nH_{2n+2}

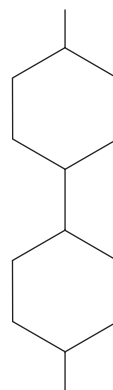
(b) Cyclohexene can form an addition polymer.

Which diagram shows two repeat units of this addition polymer?

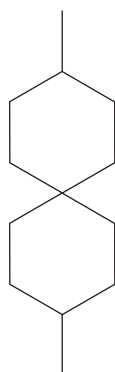
(1)



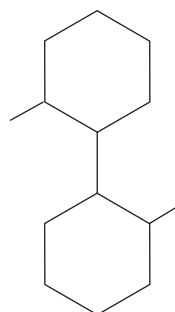
A



B



C



D

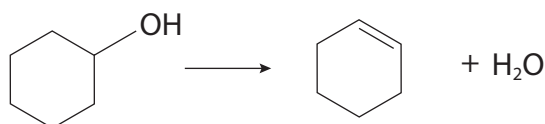
DO NOT WRITE IN THIS AREA

DO NOT WRITE IN THIS AREA

DO NOT WRITE IN THIS AREA



(c) Cyclohexanol can be converted into cyclohexene.



What mass of cyclohexanol is needed to make 7.20 g of cyclohexene, if the yield of this reaction is 72.0%?

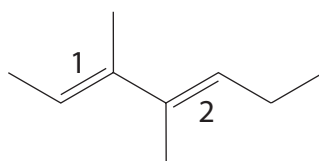
[M_r values: cyclohexanol = 100 cyclohexene = 82.0]

(1)

- A 4.25 g
- B 5.90 g
- C 8.78 g
- D 12.2 g

(Total for Question 15 = 3 marks)

16 The molecule shown has two double bonds.



Which is the correct identification for each double bond?

	Double bond 1	Double bond 2
<input type="checkbox"/> A	<i>E</i>	<i>E</i>
<input type="checkbox"/> B	<i>E</i>	<i>Z</i>
<input type="checkbox"/> C	<i>Z</i>	<i>E</i>
<input type="checkbox"/> D	<i>Z</i>	<i>Z</i>

(Total for Question 16 = 1 mark)

TOTAL FOR SECTION A = 20 MARKS



DO NOT WRITE IN THIS AREA

DO NOT WRITE IN THIS AREA

DO NOT WRITE IN THIS AREA

BLANK PAGE



P 7 8 2 1 2 A 0 1 1 2 8

SECTION B

Answer ALL the questions. Write your answers in the spaces provided.

- 17** Sodium hydroxide can be obtained as a hydrate, $\text{NaOH}\cdot x\text{H}_2\text{O}$.
When heated, the water of crystallisation is lost, leaving anhydrous sodium hydroxide, NaOH , as shown in the equation.



An experiment was carried out to determine the value of x in $\text{NaOH}\cdot x\text{H}_2\text{O}$.

Procedure

- Step 1** Weigh and record the mass of a clean, dry crucible.
Step 2 Add approximately 1.0 g of $\text{NaOH}\cdot x\text{H}_2\text{O}$ to the crucible and record the mass.
Step 3 Heat the crucible and its contents until a constant mass has been reached.
Step 4 After allowing to cool, reweigh the crucible and the anhydrous solid.
Step 5 Calculate and record the mass of the anhydrous solid.

Repeat Steps **1** to **5** using a different mass of the hydrated sodium hydroxide.

Results

Mass of $\text{NaOH}\cdot x\text{H}_2\text{O}$ / g	Mass of NaOH / g
1.00	0.69
2.10	1.45
3.50	2.41
4.90	3.38
6.60	4.55
8.00	5.52

DO NOT WRITE IN THIS AREA

DO NOT WRITE IN THIS AREA

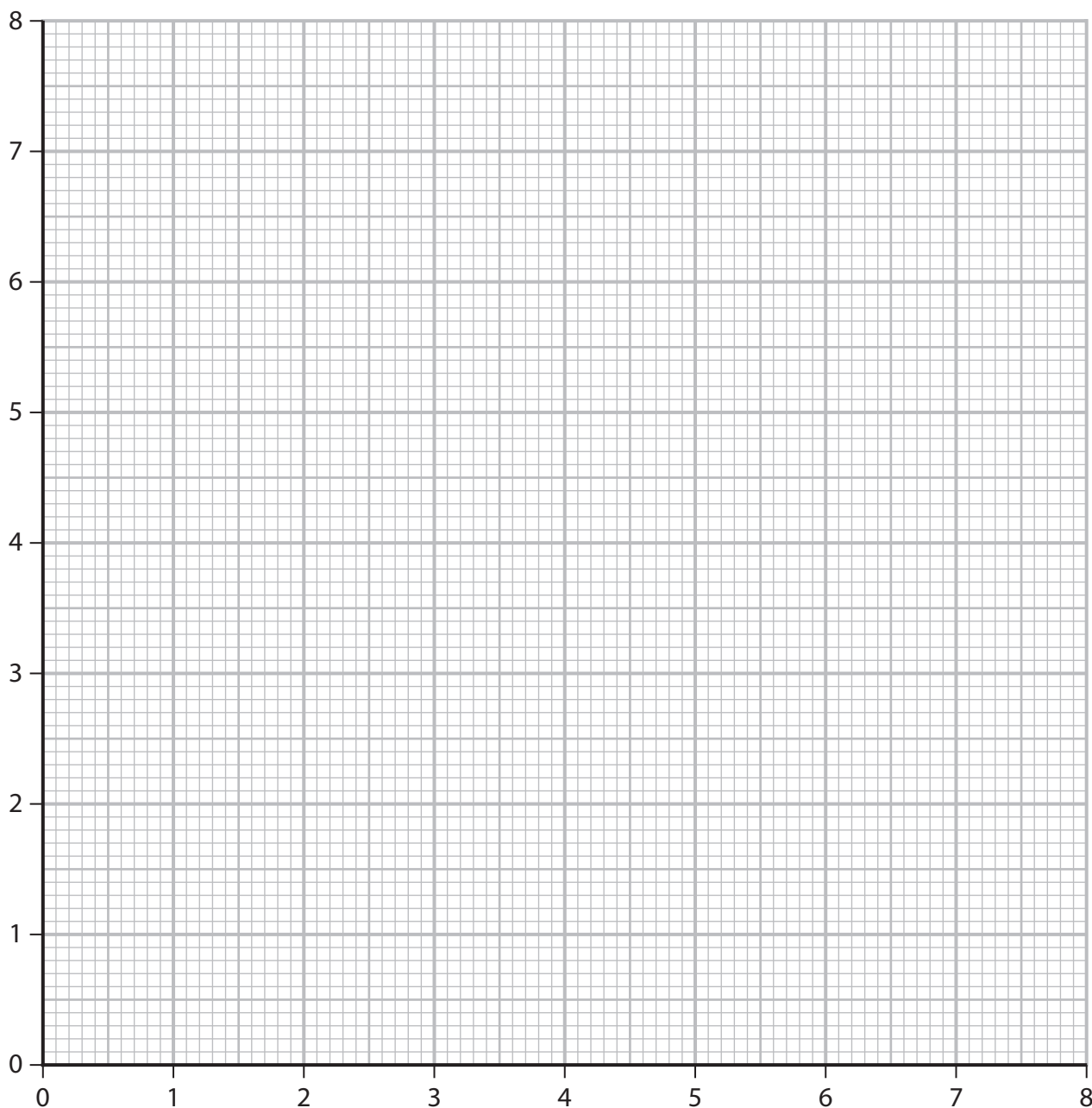
DO NOT WRITE IN THIS AREA



(a) (i) Complete a graph of the results by

- plotting the points
- labelling the axes
- including a straight line of best fit.

(3)



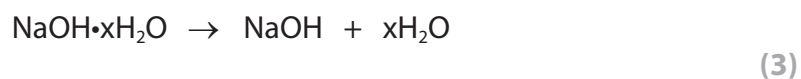
(ii) Use your graph to determine the mass of $\text{NaOH}\cdot x\text{H}_2\text{O}$ needed to form 4.0 g of NaOH . You must show your working on the graph.

(1)



P 7 8 2 1 2 A 0 1 3 2 8

- (iii) Calculate the value of x in $\text{NaOH}\cdot x\text{H}_2\text{O}$ using your answer to (a)(ii) and the equation for the reaction.



- (b) Sodium hydroxide also forms a heptahydrate, $\text{NaOH}\cdot 7\text{H}_2\text{O}$.

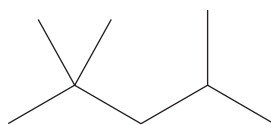
Calculate the mass of this heptahydrate needed to make 250 cm^3 of a solution of sodium hydroxide of concentration 0.150 mol dm^{-3} .

(2)

(Total for Question 17 = 9 marks)



- 18** Molecules of isooctane, found in petrol, have eight carbon atoms.
The skeletal formula of isooctane is shown.



- (a) Give the molecular formula, empirical formula and IUPAC name for isooctane.

(3)

Molecular formula

Empirical formula

IUPAC name

- (b) Isooctane and octane are isomers that are both found in crude oil.
Octane has a boiling temperature of 125 °C, and isooctane has a boiling temperature of 99 °C.

This difference in boiling temperature can be used to separate the two isomers in a laboratory.

The technique is the same as that used to separate crude oil.

- (i) Name the technique that could be used for this separation.

(1)

- (ii) Describe how this technique separates isooctane from octane.

(2)

.....

.....

.....

.....

.....



P 7 8 2 1 2 A 0 1 5 2 8

(c) Isooctane is added to petrol to increase its octane rating.
Some high-performance engines need fuel with a higher octane rating.

- (i) Write the equation for the complete combustion of isooctane.
State symbols are not required.

(1)

- (ii) Carbon monoxide and nitrogen monoxide are both pollutants produced in car engines.

Describe how each pollutant is formed in car engines, including the conditions required.

You may include appropriate equations.

(4)

DO NOT WRITE IN THIS AREA

DO NOT WRITE IN THIS AREA

DO NOT WRITE IN THIS AREA



(iii) Identify another pollutant, other than carbon dioxide, carbon monoxide and nitrogen monoxide, produced in car engines.

(1)

(d) Isooctane reacts with an excess of chlorine to form a mixture of chlorinated compounds containing the same number of carbon atoms as isooctane.

(i) State the type and mechanism of this reaction.

(1)

(ii) Give the essential condition required.

(1)

(iii) One of the chlorinated compounds contains 44.1% carbon and 6.9% hydrogen by mass.

Calculate the molecular formula of this compound.

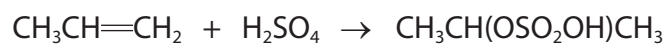
(3)

(Total for Question 18 = 17 marks)



P 7 8 2 1 2 A 0 1 7 2 8

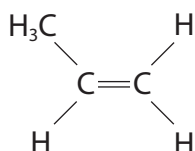
- (b) Reaction 2 proceeds in two stages.
The equation for the first stage is shown.



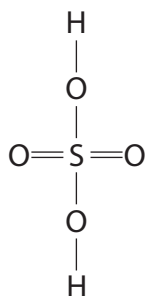
The mechanism for this reaction is the same as Reaction 1.

Complete the mechanism by including the intermediate structure, curly arrows and relevant dipoles, charges and lone pairs.

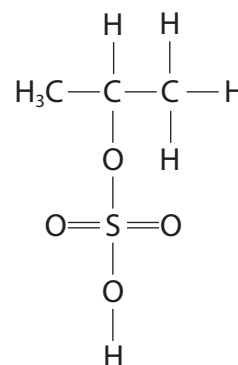
(4)



Step 1



Step 2



(Total for Question 19 = 8 marks)

DO NOT WRITE IN THIS AREA

DO NOT WRITE IN THIS AREA

DO NOT WRITE IN THIS AREA



20 The periods in the Periodic Table show trends in physical properties.

(a) (i) Explain the general trend in first ionisation energies for the Period 2 elements.

(2)

.....

.....

.....

.....

.....

.....

(ii) Explain which **one** of the elements from **lithium** to **nitrogen** deviates from this general trend.

(3)

.....

.....

.....

.....

.....

.....

.....

.....

.....

.....

DO NOT WRITE IN THIS AREA

DO NOT WRITE IN THIS AREA

DO NOT WRITE IN THIS AREA



- (b) Identify the **Period 3** element that has the following successive ionisation energies.

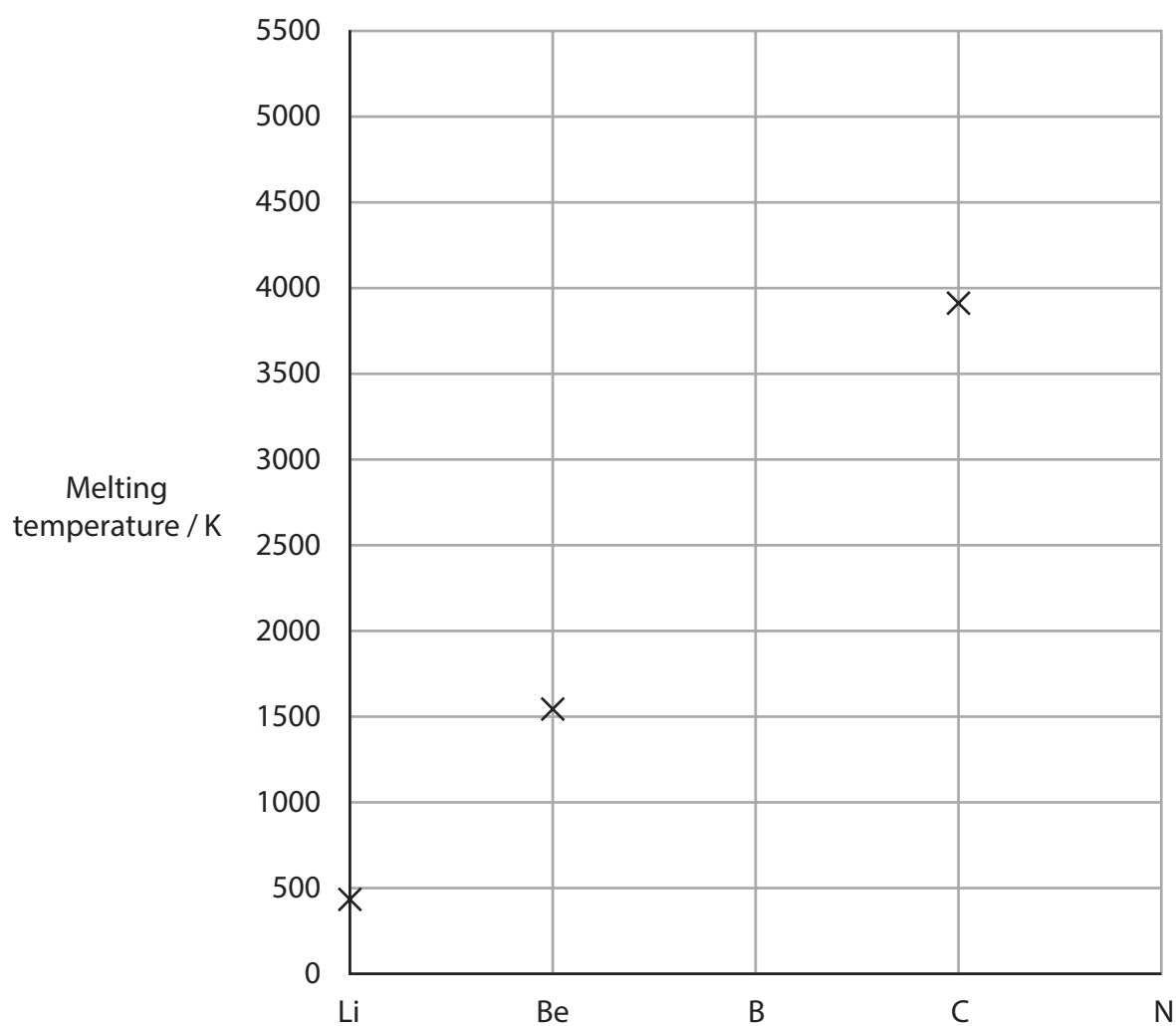
Ionisation energy / kJ mol^{-1}							
First	Second	Third	Fourth	Fifth	Sixth	Seventh	Eighth
1000	2251	3361	4564	7012	8496	27107	31671

(1)

- (c) (i) The diagram shows the melting temperatures of the elements in Period 2 from lithium to nitrogen.

Complete the diagram by putting crosses to show the approximate melting temperatures of boron and nitrogen.

(2)



P 7 8 2 1 2 A 0 2 1 2 8

(ii) Explain why the melting temperature of carbon is high, with reference to its structure and bonding.

(3)

.....

.....

.....

.....

.....

.....

.....

.....

.....

.....

.....

(Total for Question 20 = 11 marks)

DO NOT WRITE IN THIS AREA

DO NOT WRITE IN THIS AREA

DO NOT WRITE IN THIS AREA



21 Boron, aluminium and thallium are in Group 3 of the Periodic Table.

These elements form molecular compounds with chlorine with the formulae BCl_3 , AlCl_3 and TlCl_3 . The shape of these molecules depends on the electronic structures of the Group 3 elements.

(a) (i) Give the electronic configuration of aluminium.

(1)

(ii) Compare and contrast the electronic structures of boron, aluminium and thallium.

(2)

(iii) Deduce, using electron-pair repulsion theory, the expected shape of BCl_3 , AlCl_3 and TlCl_3 . Justify your answer.

(3)

DO NOT WRITE IN THIS AREA

DO NOT WRITE IN THIS AREA

DO NOT WRITE IN THIS AREA



P 7 8 2 1 2 A 0 2 3 2 8

- (b) Aluminium chloride is a solid at room temperature.
At the relatively low temperature of 453 K it sublimes.

- (i) A sample of 5.00 g of aluminium chloride was heated to 455 K at a pressure of 1.01×10^5 Pa.
When all the aluminium chloride had vaporised, the final volume of gas was 700 cm^3 .

Show that the data is consistent with the formula of aluminium chloride in the gas phase being Al_2Cl_6 .

[Gas constant $R = 8.31 \text{ J mol}^{-1} \text{ K}^{-1}$ Ideal gas equation $pV = nRT$]

(3)

- (ii) Draw the dot-and-cross diagram for Al_2Cl_6 . Use dots (•) for the electrons of aluminium and crosses (×) for the electrons of chlorine.

(3)



- (c) Thallium also forms ions containing chlorine, for example the TlCl_4^{3-} ion. In this ion, the thallium atom has 10 electrons in its outermost shell. Phosphorus in phosphorus pentachloride, PCl_5 , also has 10 electrons in its outer shell.

Draw the shape of the TlCl_4^{3-} ion and predict the bond angles. Include any lone pairs of electrons that influence the shape.

(3)

(Total for Question 21 = 15 marks)

TOTAL FOR SECTION B = 60 MARKS
TOTAL FOR PAPER = 80 MARKS



DO NOT WRITE IN THIS AREA

DO NOT WRITE IN THIS AREA

DO NOT WRITE IN THIS AREA

BLANK PAGE



DO NOT WRITE IN THIS AREA

DO NOT WRITE IN THIS AREA

DO NOT WRITE IN THIS AREA

BLANK PAGE



The Periodic Table of Elements

1 2 3 4 5 6 7 0 (8) (18)

1.0	H
	hydrogen
	1

Key

relative atomic mass
atomic symbol
name
atomic (proton) number

(1)	(2)	(3)	(4)	(5)	(6)	(7)	(8)	(9)	(10)	(11)	(12)	(13)	(14)	(15)	(16)	(17)	(18)
6.9	9.0	45.0	47.9	50.9	52.0	54.9	55.8	58.9	58.7	63.5	65.4	10.8	12.0	14.0	16.0	19.0	4.0
Li	Be	Sc	Ti	V	Cr	Mn	Fe	Co	Ni	Cu	Zn	B	C	N	O	F	He
lithium	beryllium	scandium	titanium	vanadium	chromium	manganese	iron	cobalt	nickel	copper	zinc	boron	carbon	nitrogen	oxygen	fluorine	helium
3	4	21	22	23	24	25	26	27	28	29	30	5	6	7	8	9	2
23.0	24.3	88.9	91.2	92.9	95.9	[98]	101.1	102.9	106.4	107.9	112.4	27.0	28.1	31.0	32.1	35.5	39.9
Na	Mg	Y	Zr	Nb	Mo	Tc	Ru	Rh	Pd	Ag	Cd	Al	Si	P	S	Cl	Ar
sodium	magnesium	yttrium	zirconium	niobium	molybdenum	technetium	ruthenium	rhodium	palladium	silver	cadmium	aluminium	silicon	phosphorus	sulfur	chlorine	argon
11	12	39	40	41	42	43	44	45	46	47	48	13	14	15	16	17	18
39.1	40.1	88.9	91.2	92.9	95.9	[98]	101.1	102.9	106.4	107.9	112.4	27.0	28.1	31.0	32.1	35.5	39.9
K	Ca	La*	Hf	Ta	W	Re	Os	Ir	Pt	Au	Hg	Ga	Ge	As	Se	Br	Kr
potassium	calcium	lanthanum	hafnium	tantalum	tungsten	rhenium	osmium	iridium	platinum	gold	mercury	gallium	germanium	arsenic	selenium	bromine	krypton
19	20	57	72	73	74	75	76	77	78	79	80	31	32	33	34	35	36
85.5	87.6	138.9	178.5	180.9	183.8	186.2	190.2	192.2	195.1	197.0	200.6	69.7	72.6	74.9	79.0	79.9	83.8
Rb	Sr	Ba	Hf	Ta	W	Re	Os	Ir	Pt	Au	Hg	In	Sn	Sb	Te	I	Xe
rubidium	strontium	barium	hafnium	tantalum	tungsten	rhenium	osmium	iridium	platinum	gold	mercury	indium	tin	antimony	tellurium	iodine	xenon
37	38	56	72	73	74	75	76	77	78	79	80	49	50	51	52	53	54
132.9	137.3	138.9	178.5	180.9	183.8	186.2	190.2	192.2	195.1	197.0	200.6	114.8	118.7	121.8	127.6	126.9	131.3
Cs	Ba	La*	Hf	Ta	W	Re	Os	Ir	Pt	Au	Hg	Tl	Pb	Bi	Po	At	Rn
caesium	barium	lanthanum	hafnium	tantalum	tungsten	rhenium	osmium	iridium	platinum	gold	mercury	thallium	lead	bismuth	polonium	astatine	radon
55	56	57	72	73	74	75	76	77	78	79	80	81	82	83	84	85	86
[223]	[226]	[227]	[261]	[262]	[266]	[264]	[277]	[268]	[271]	[272]	[272]	204.4	207.2	209.0	[209]	[210]	[222]
Fr	Ra	Ac*	Rf	Db	Sg	Bh	Hs	Mt	Ds	Rg	Rg	Po	Pb	Bi	Po	At	Rn
francium	radium	actinium	rutherfordium	dubnium	seaborgium	bohrium	hassium	meitnerium	darmstadtium	roentgenium	roentgenium	thallium	lead	bismuth	polonium	astatine	radon
87	88	89	104	105	106	107	108	109	110	111	111	81	82	83	84	85	86

Elements with atomic numbers 112-116 have been reported but not fully authenticated

140	141	144	150	152	157	163	165	167	173	175
Ce	Pr	Nd	Sm	Eu	Gd	Dy	Ho	Er	Yb	Lu
cerium	praseodymium	neodymium	samarium	europium	gadolinium	dysprosium	holmium	erbium	ytterbium	lutetium
58	59	60	62	63	64	66	67	68	70	71
232	[231]	238	[242]	[243]	[247]	[251]	[254]	[253]	[254]	[257]
Th	Pa	U	Pu	Am	Cm	Cf	Es	Fm	No	Lr
thorium	protactinium	uranium	plutonium	americium	curium	californium	einsteinium	fermium	nobelium	lawrencium
90	91	92	94	95	96	98	99	100	102	103

* Lanthanide series

* Actinide series

DO NOT WRITE IN THIS AREA

DO NOT WRITE IN THIS AREA

DO NOT WRITE IN THIS AREA

